

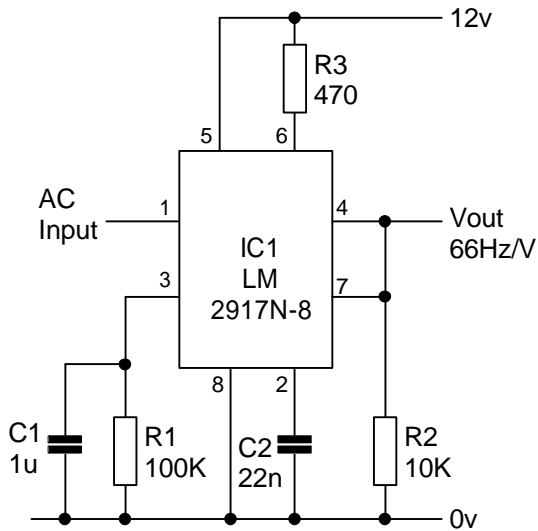
# LM2917 EXAMPLE CIRCUITS

The following examples have been taken from the PDF datasheet.

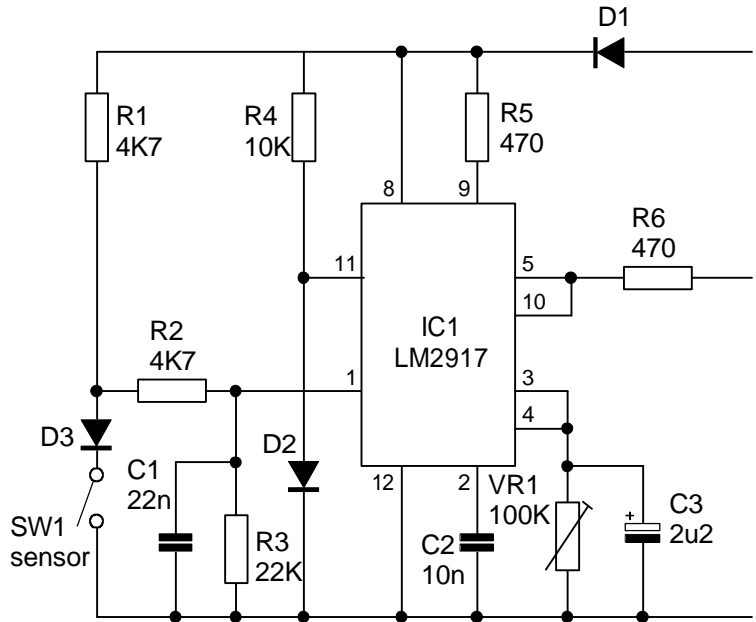
There are 2 types:

- Frequency to voltage conversion
- Frequency detection

## Frequency to Voltage conversion

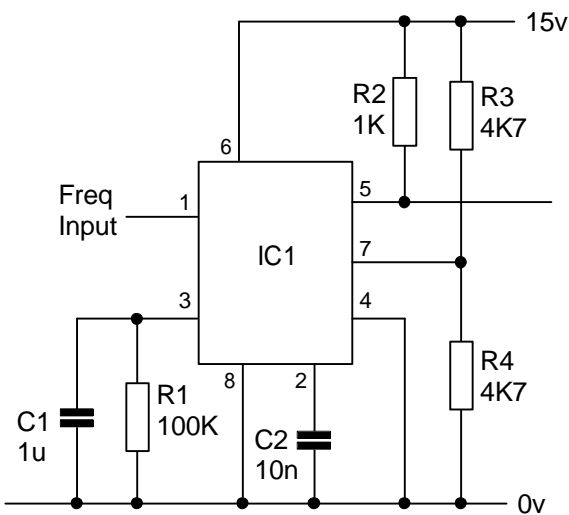


Basic Frequency to Voltage Converter.  
Will measure from around 10Hz to 700Hz.  
Input must be an AC signal.

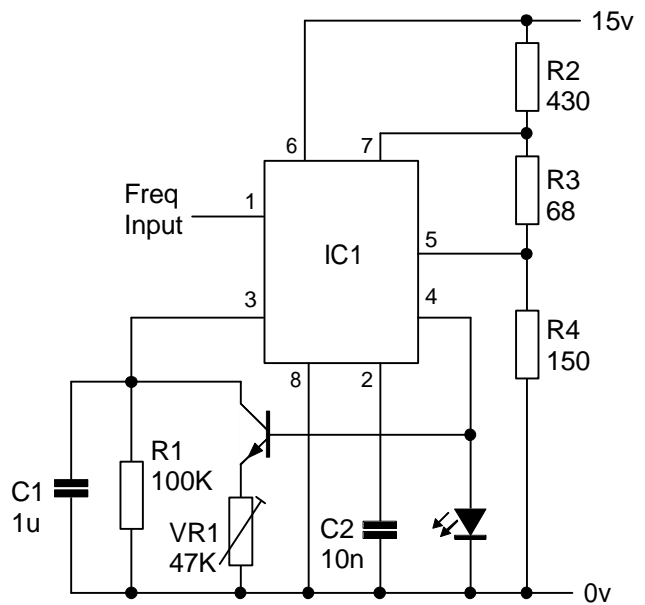


Tachometer driven from points (sensor). Modification has been made to enable the source to be pulsed DC instead of AC.  
Note this uses the 14pin version of the IC.

## Frequency Detection



Frequency switch  
Pin 5 low when  $F_{in} > 1/(2 R1 \times C2)$   
In this example, switch frequency = 500Hz



Over Frequency Indicator with flashing LED  
Trip point >100Hz.