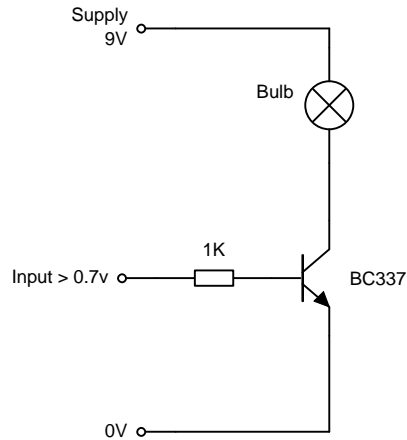
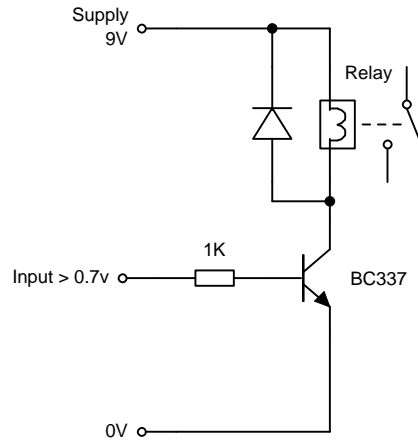


## DRIVERS

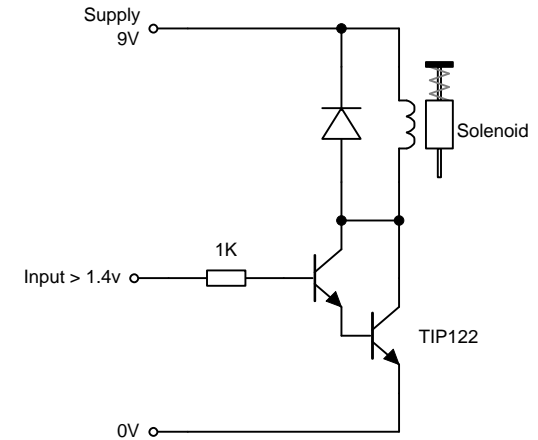
The following are all examples of driver circuits that can be used on the outputs of logic gates for example. They provide current drive by using various types of transistors. The devices shown are suggested ones and can be changed. Remember to check that the transistor can deliver enough current by checking  $I_c$  and also use a protection diode if driving inductive loads (anything with a coil in it!).



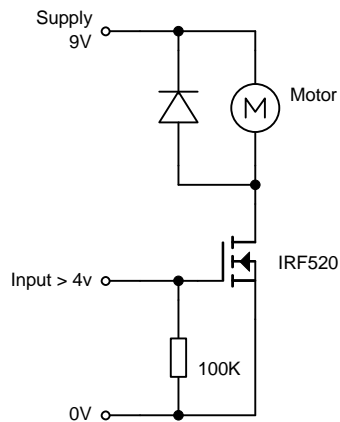
Simple NPN driver  
Can provide up to 400mA



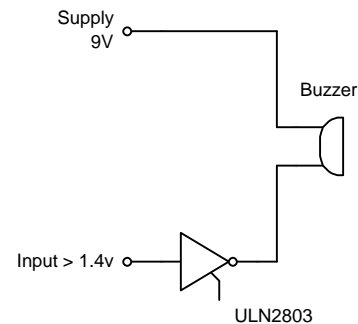
Simple NPN driver  
Note using a protection diode



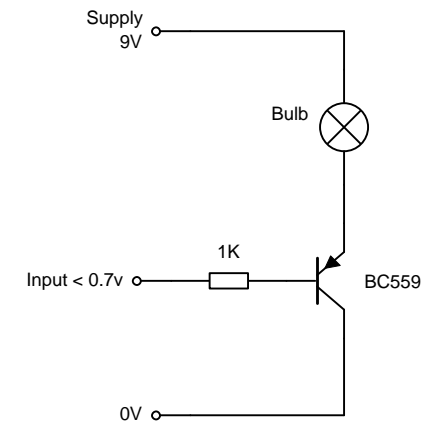
NPN Darlington driver  
Can provide up to 5A



MOSFET driver  
Can provide up to 10A



Integrated Darlington driver  
Can provide up to 500mA, useful  
if you need lots of drivers



Simple PNP driver  
Can provide up to 400mA.  
Note switches on with low input