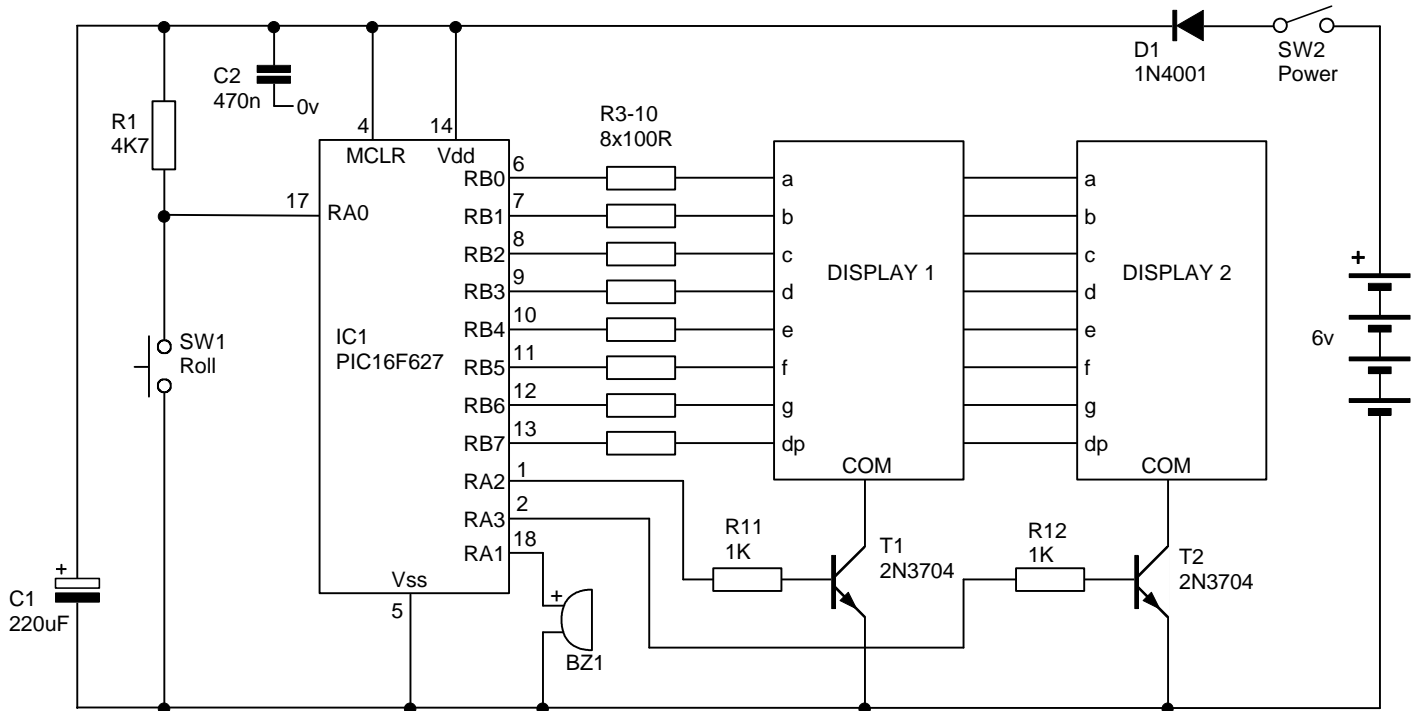


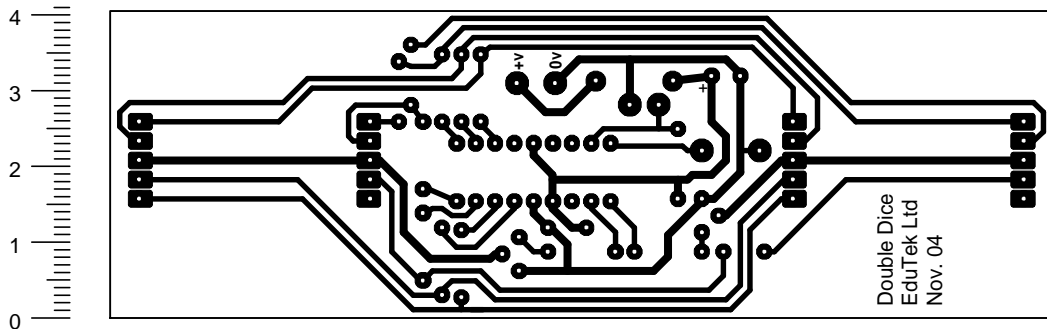
# PIC DOUBLE DIE v2 - Designed by Phil Townshend

This circuit is based around a PIC. Use a tilt switch for SW1 (roll) and all you have to do is shake the PCB to roll the dice. All components are mounted on the PCB.

Please contact [edutek.ltd.uk](http://edutek.ltd.uk) for a pre-programmed PIC.



Board size: 125mm x 41mm  
Note: R2 omitted



Double Dice  
EduTek Ltd  
Nov. 04

